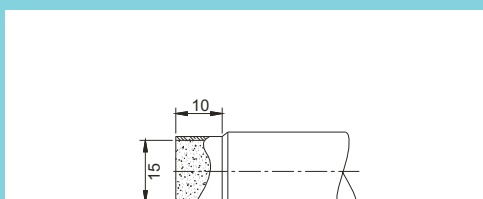
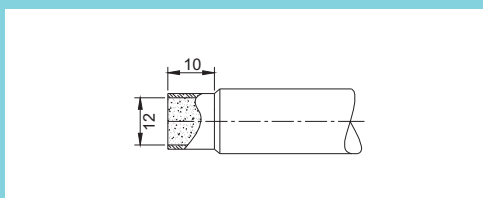
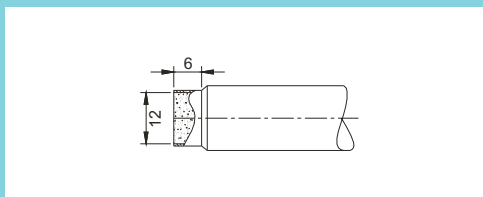
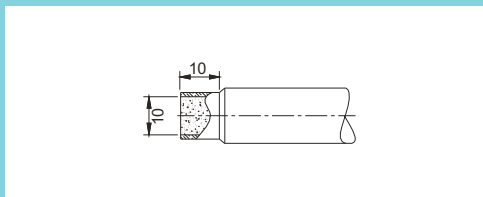
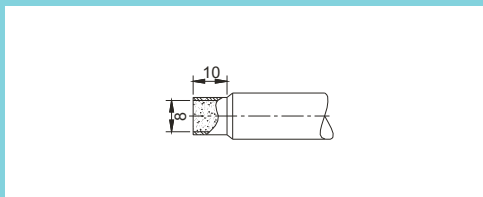
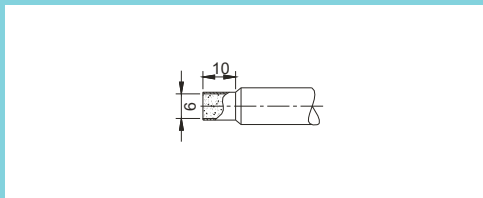
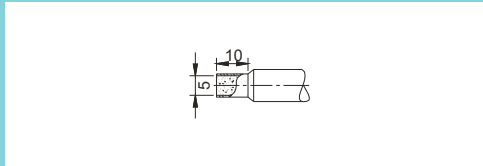
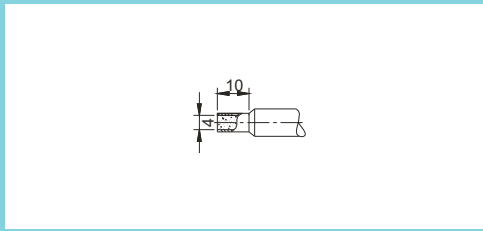


Impregnated Diamond Dresser

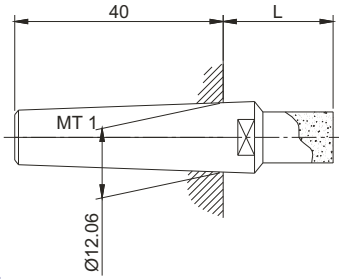
Tool	US Mesh	Tool Code
I D 4 4 x 10 mm	25 / 30	I D 4A
	40 / 50	I D 4B
	60 / 70	I D 4C
	80 / 100	I D 4D
I D 5 5 X 10 mm	25 / 30	I D 5A
	40 / 50	I D 5B
	60 / 70	I D 5C
	80 / 100	I D 5C
I D 6 6 X 10 mm	18 / 20	I D 6A
	25 / 30	I D 6B
	40 / 50	I D 6C
	50 / 60	I D 6D
	70 / 100	I D 6E
	100 / 120	I D 6F
I D 8 8 X 10 mm	18 / 20	I D 8A
	25 / 30	I D 8B
	40 / 50	I D 8C
	50 / 60	I D 8D
	70 / 100	I D 8E
I D 10 10 X 10 mm	18 / 20	I D 10A
	25 / 30	I D 10B
	40 / 50	I D 10C
	50 / 60	I D 10D
	70 / 100	I D 10E
	100 / 120	I D 10F
I D 12 12 X 6 mm	18 / 20	I D 12A
	25 / 30	I D 12B
	40 / 50	I D 12C
	50 / 60	I D 12D
	70 / 100	I D 12E
	100 / 120	I D 12F
I D 12 L 12 X 10	18 / 20	I D 12LA
	25 / 30	I D 12LB
	40 / 50	I D 12LC
	50 / 60	I D 12LD
	70 / 100	I D 12LE
	100 / 120	I D 12LF
I D 15 15 X 6 mm	18 / 20	I D 15A
	25 / 30	I D 15B
	40 / 50	I D 15C
	50 / 60	I D 15D
	70 / 100	I D 15E
	100 / 120	I D 15F

Note:

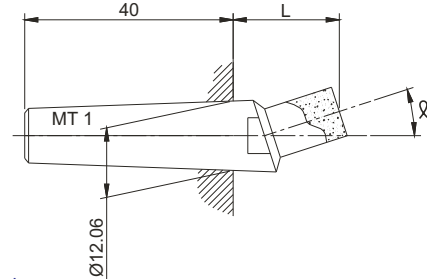
☞ Above tools can be manufactured in two bonds
H-Hard Bond S-Soft Bond



Impregnated Tools In Different Holders

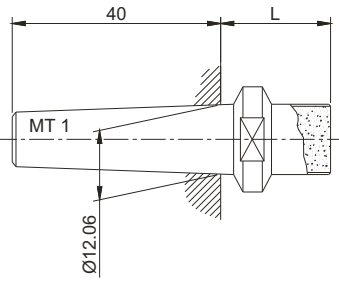


Tool Code
IDS1

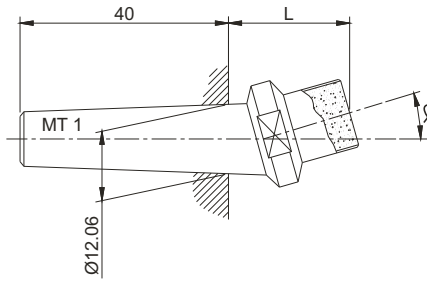


Tool Code
IDS2

α -10°or15°

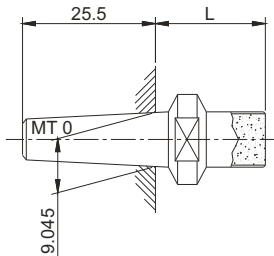


Tool Code
IDS3

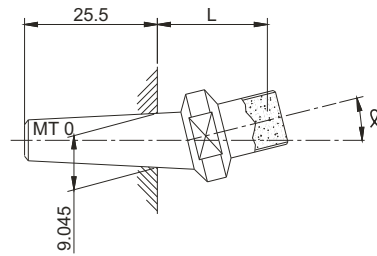


Tool Code
IDS4

α -10°or15°

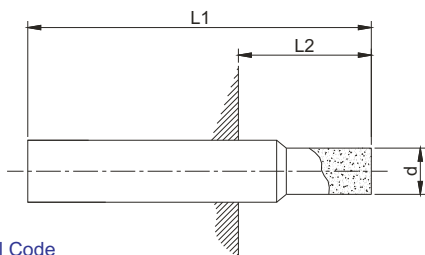


Tool Code
IDS5

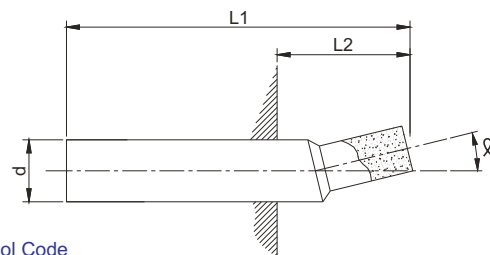


Tool Code
IDS6

α -10°or15°



Tool Code
IDS7

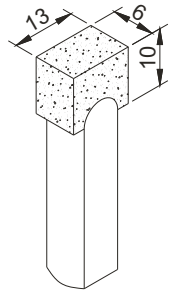


Tool Code
IDS8

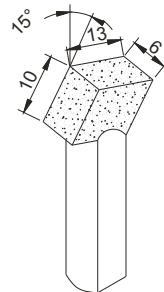
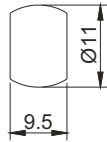
α -10°or15°



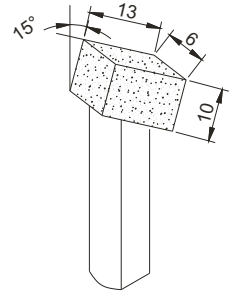
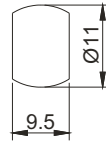
Impregnated Blocks



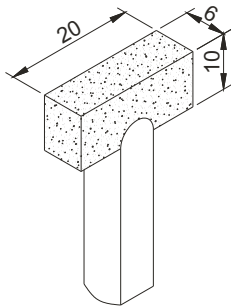
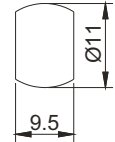
Tool Code
IDBS1



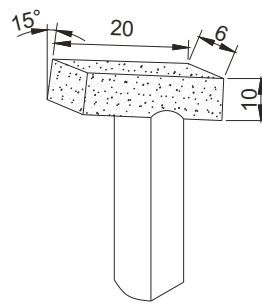
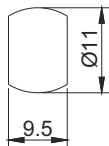
Tool Code
IDBS2



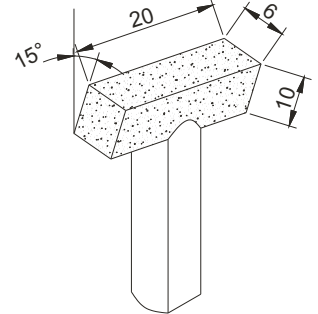
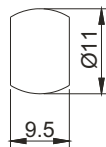
Tool Code
IDBS3



Tool Code
IDBS4



Tool Code
IDBS5



Tool Code
IDBS6

